



EPOS-SEISMOLOGY – STRATEGY AND OUTLOOK FOR AN EUROPEAN INTEGRATED SEISMOLOGICAL SERVICE INFRASTRUCTURE

Florian HASLINGER¹ and EPOS WG1-Seismology²

EPOS-Seismology (EPOS-S), the seismological Thematic Core Service (TCS) of EPOS, aims to build a framework in which on one hand the various services that are existing or currently under implementation in seismology can be sustained and further developed, and on the other hand new services can be built and integrated. EPOS-S will also serve as the coordination platform to interact with the other TCS and the Integrated Core Service (ICS) in terms of service sharing and distribution (i.e. avoiding duplication of efforts) as well as standardization of tools, formats and protocols. The vision of the EPOS-S structure is depicted in Figure 1, showing the four distinct service pillars and their contributing service nodes, and indicating the various data & service products to be covered.

We present the current status of developments in EPOS-S, also in context to known or expected future funding opportunities, and reflect on the manifold challenges in the process of creating a truly European community infrastructure for seismology, as for example:

- how to define and agree upon which services should be integrated in EPOS-S, and in what governance and management structure;
- how to ensure that EPOS-S common services are a true benefit for and add value to national or institutional services, rather than being (perceived as) in competition;
- how to attain the required active engagement, support and contribution from the seismological community that are both the users of EPOS-S and the providers of data & services;
- how to monitor and measure usage of the services in order to appropriately assess their scientific and socio-economic impact.

With this contribution we hope to stimulate a discussion on the build-up of EPOS-S that allows us as a community to move ahead in confidence that resources invested in EPOS-S are well spent.

¹ Florian Haslinger, Swiss Seismological Service at ETH Zürich, ETH Zürich, haslinger@sed.ethz.ch

² see <http://www.epos-eu.org/preparatory-phase/working-groups/wg1-seismological-obs.html>

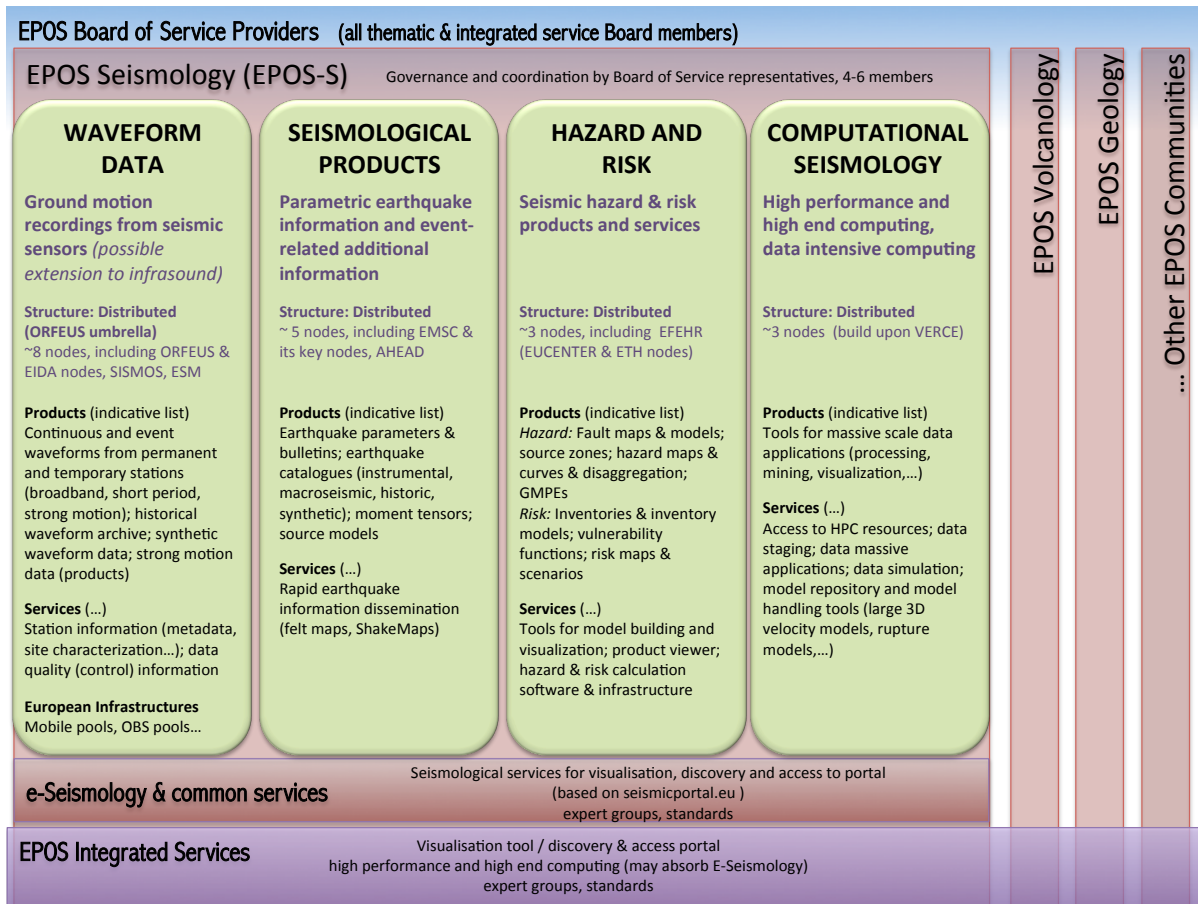


Figure 1. The structure of EPOS-S and its connection to other EPOS elements